

Type YSL-1, 2 Safety Valve (Low Lift Type)

Boiler Heat Exchanger
Secondary Side of Pressure Reducing Valve

The type YSL can be commonly used for various types of fluid (steam, vapor, liquid). It has a simple structure and is made of materials with a superb level of corrosion resistance. It is a safety valve that can be used for various purposes, such as a pressure vessel, safety device for various instruments and equipment, hot water boiler, water (including hot water) supplying equipment, cooling and heating facility, and safety device of pressure reducing valves.



Type YSL-1



Type YSL-2

■ Features

- Simple structure and outstanding performance.
- Disc and seat are free from leakage or transformation issues, thanks to a precision machining process.
- Test lever attached : Periodical performance inspections can be conducted.
- Approval from the Korea Occupational Safety and Health Agency (KOSHA).

■ Specifications

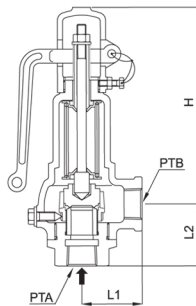
| Type | YSL-1 | YSL-2 |
|-------------------------|------------------------------|-------|
| Test lever | Yes | No |
| Applicable fluid | Steam, air | water |
| Set pressure range | 0.35~10kgf/cm ² g | |
| Fluid temperature | 220° C below | |
| End connection | KS PT SCREW | |
| Materials | Body | GC200 |
| | Disc, seat | STS |
| Hydraulic test pressure | 15 kgf/cm ² g | |

■ Dimensions

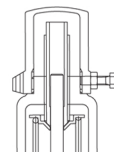
(mm)

| Size | Seat diameter | | Lift | Effective area (mm) | | Face to Face | | Height(h) | | Connection size | | Weight(kg) | |
|-----------------------|---------------|-----|-------|---------------------|--------------------|--------------|-----|-----------|--------|-----------------|-----|------------|-------|
| | D | φ | | πD / | πD ² /4 | L1 | L2 | YSL-1 | YSL-2 | IN | OUT | YSL-1 | YSL-2 |
| 15(1/2")X15(1/2") | 15 | 0.4 | 18.8 | 176.6 | 40 | 41 | 127 | 112 | 1/2" | 1/2" | 1.1 | 1 | |
| 20(3/4")X20(3/4") | 20 | 0.5 | 31.4 | 314 | 50 | 50 | 137 | 122 | 3/4" | 3/4" | 1.8 | 1.7 | |
| 25(1")X25(1") | 25 | 0.7 | 54.9 | 490.8 | 55 | 60 | 162 | 148 | 1" | 1" | 3 | 2.9 | |
| 40(1 1/2")X40(1 1/2") | 40 | 1.0 | 125.6 | 1256.6 | 70 | 75 | 230 | 216 | 1 1/2" | 1 1/2" | 6.4 | 6.1 | |
| 50(2")X50(2") | 50 | 1.3 | 204.1 | 1963.5 | 80 | 80 | 245 | 245 | 2" | 2" | 9.3 | 9 | |

■ Dimensional drawing



Type YSL-1



Type YSL-2